

## FCC ID: 2APR4-M2

This device complies with Part 15 of the FCC rules. Operation is subjected to the following two conditions: (1) this device may not cause harmful interference, and (2) this device must accept any interference received, including interference that may cause undesired operation. Changes or modifications not expressly approved by the party responsible for compliance could void your authority to operate the equipment.

The device for operation in the band 5150-5250 MHz is only for indoor use to reduce the potential for harmful interference to co-channel mobile satellite systems;

This device complies with Industry Canada's licence-exempt RSSs. Operation is subject to the following two conditions:

- (1) This device may not cause interference; and
- (2) This device must accept any interference, including interference that may cause undesired operation of the device.

The distance between user and products should be no less than 20 cm.

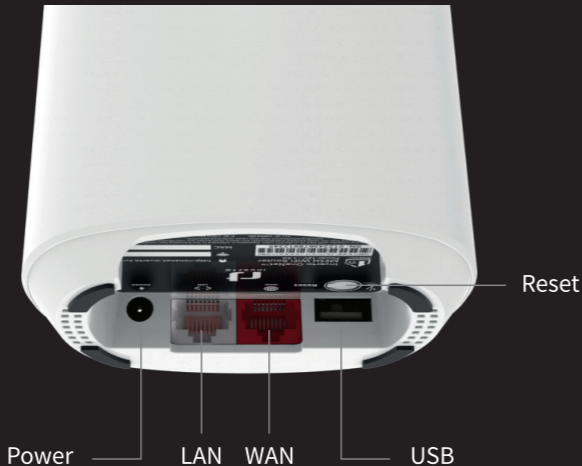
This equipment has been tested and found to comply with the limits for a Class B digital device, pursuant to Part 15 of the FCC Rules. These limits are designed to provide reasonable protection against harmful interference in a residential installation. This equipment generates, uses and can radiate radio frequency energy and, if not installed and used in accordance with the instructions, may cause harmful interference to radio communications. However, there is no guarantee that interference will not occur in a particular installation.

If this equipment does cause harmful interference to radio or television reception, which can be determined by turning the equipment off and on, the user is encouraged to try to correct the interference by one or more of the following measures:

- Reorient or relocate the receiving antenna.
- Increase the separation between the equipment and receiver.
- Connect the equipment into an outlet on a circuit different from that to which the receiver is connected.
- Consult the dealer or an experienced radio/TV technician for help.

Thank you for choosing **OneNet™** Router

## ← Set-up in 3 steps



Port configuration



[www.inverto.tv](http://www.inverto.tv)

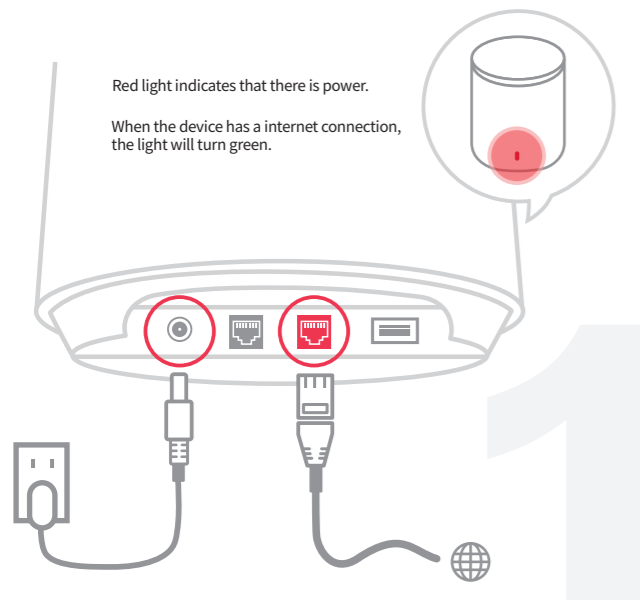


**OneNet™**  
**MESH WIFI Router**  
**Set-up Guide**

V050421

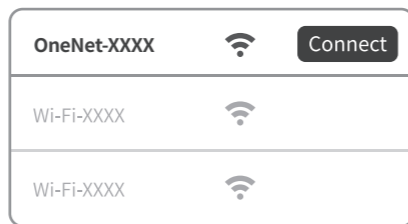
# Set-up Guide

## 1. Connect to the power and WAN cables



## 2. Connect to Wi-Fi

Use your mobile device or computer to search for and connect to the **OneNet-XXXX** Wi-Fi network (no password required).



\* **OneNet-XXXX** - to find this, please locate on the bottom label.

2

## 3. Open the browser or the OneNet™ app

Visit **onenet.inverto.tv** through a browser to complete setup.

Android users

Please download the application from:

**www.inverto.tv/support** or scan the **QR code** below.

iOS users

The application will be available soon.



**Need help?**  
[www.inverto.tv/support](http://www.inverto.tv/support)